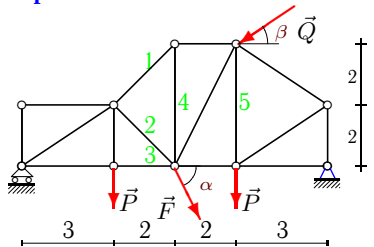
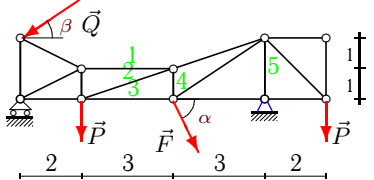
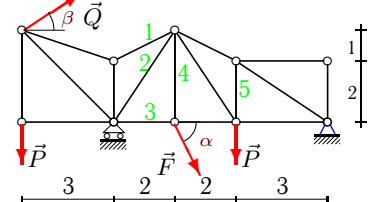
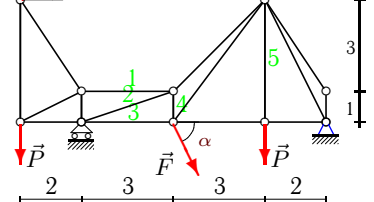
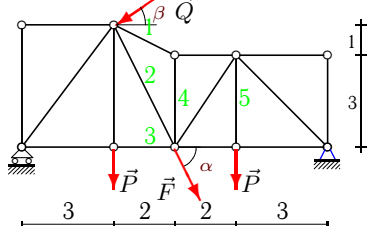
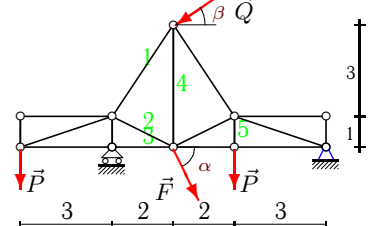
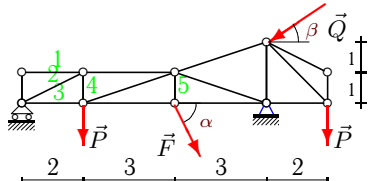
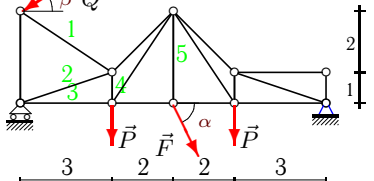
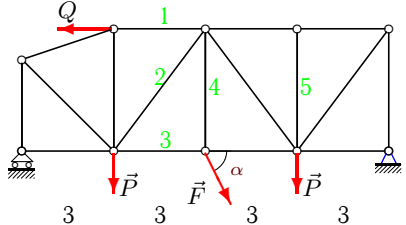
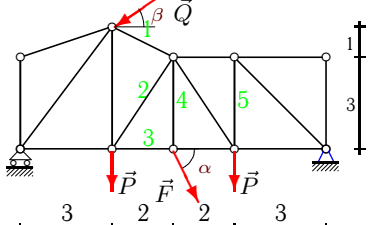
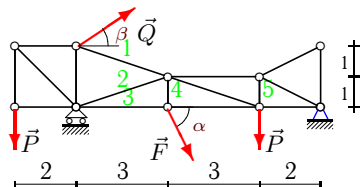


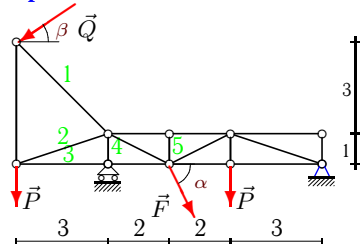
Расчет фермы

Кирсанов М.Н. Решебник. Теоретическая механика с. 37.

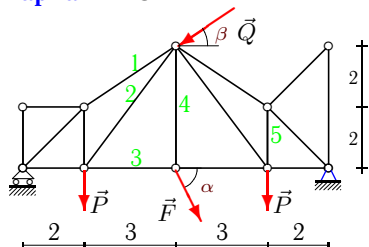
<p>Вариант 1</p>  <p>C5. $P = 60\text{кН}$, $Q = 60\text{кН}$, $F = 23\text{кН}$, $\alpha = 40^\circ$, $\beta = 30^\circ$.</p>	<p>Вариант 2</p>  <p>C5. $P = 30\text{кН}$, $Q = 90\text{кН}$, $F = 27\text{кН}$, $\alpha = 70^\circ$, $\beta = 45^\circ$.</p>
<p>Вариант 3</p>  <p>C5. $P = 90\text{кН}$, $Q = 40\text{кН}$, $F = 48\text{кН}$, $\alpha = 55^\circ$, $\beta = 45^\circ$.</p>	<p>Вариант 4</p>  <p>C5. $P = 60\text{кН}$, $Q = 80\text{кН}$, $F = 47\text{кН}$, $\alpha = 40^\circ$, $\beta = 45^\circ$.</p>
<p>Вариант 5</p>  <p>C5. $P = 80\text{кН}$, $Q = 70\text{кН}$, $F = 71\text{кН}$, $\alpha = 50^\circ$, $\beta = 30^\circ$.</p>	<p>Вариант 6</p>  <p>C5. $P = 80\text{кН}$, $Q = 50\text{кН}$, $F = 81\text{кН}$, $\alpha = 50^\circ$, $\beta = 45^\circ$.</p>
<p>Вариант 7</p>  <p>C5. $P = 50\text{кН}$, $Q = 80\text{кН}$, $F = 73\text{кН}$, $\alpha = 35^\circ$, $\beta = 45^\circ$.</p>	<p>Вариант 8</p>  <p>C5. $P = 50\text{кН}$, $Q = 40\text{кН}$, $F = 99\text{кН}$, $\alpha = 35^\circ$, $\beta = 30^\circ$.</p>
<p>Вариант 9</p>  <p>C5. $P = 90\text{кН}$, $Q = 40\text{кН}$, $F = 116\text{кН}$, $\alpha = 55^\circ$.</p>	<p>Вариант 10</p>  <p>C5. $P = 90\text{кН}$, $Q = 70\text{кН}$, $F = 10\text{кН}$, $\alpha = 55^\circ$, $\beta = 30^\circ$.</p>

Вариант 11

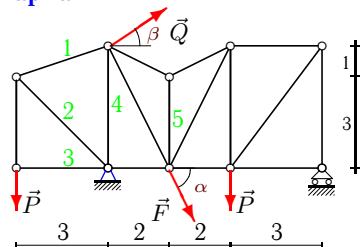
C5.
 $P = 10\text{кН}$,
 $Q = 80\text{кН}$,
 $F = 11\text{кН}$,
 $\alpha = 60^\circ$,
 $\beta = 45^\circ$.

Вариант 12

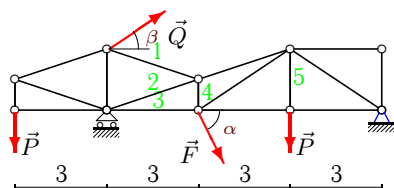
C5.
 $P = 40\text{кН}$,
 $Q = 50\text{кН}$,
 $F = 12\text{кН}$,
 $\alpha = 75^\circ$,
 $\beta = 45^\circ$.

Вариант 13

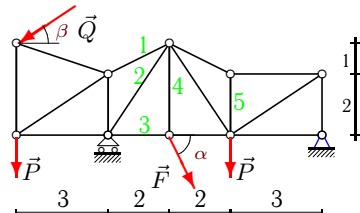
C5.
 $P = 90\text{кН}$,
 $Q = 70\text{кН}$,
 $F = 13\text{кН}$,
 $\alpha = 55^\circ$,
 $\beta = 30^\circ$.

Вариант 14

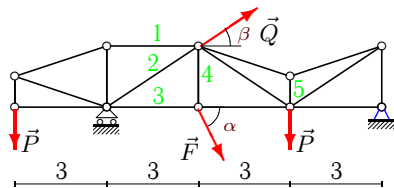
C5.
 $P = 50\text{кН}$,
 $Q = 50\text{кН}$,
 $F = 14\text{кН}$,
 $\alpha = 35^\circ$,
 $\beta = 30^\circ$.

Вариант 15

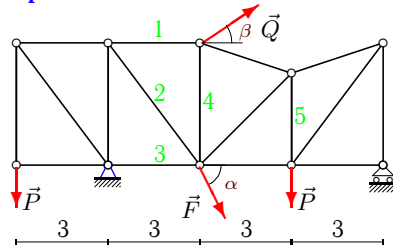
C5.
 $P = 90\text{кН}$,
 $Q = 80\text{кН}$,
 $F = 15\text{кН}$,
 $\alpha = 55^\circ$,
 $\beta = 45^\circ$.

Вариант 16

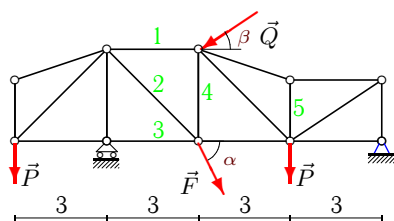
C5.
 $P = 70\text{кН}$,
 $Q = 90\text{кН}$,
 $F = 16\text{кН}$,
 $\alpha = 45^\circ$,
 $\beta = 45^\circ$.

Вариант 17

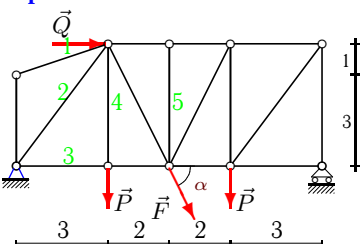
C5.
 $P = 10\text{кН}$,
 $Q = 70\text{кН}$,
 $F = 17\text{кН}$,
 $\alpha = 60^\circ$,
 $\beta = 45^\circ$.

Вариант 18

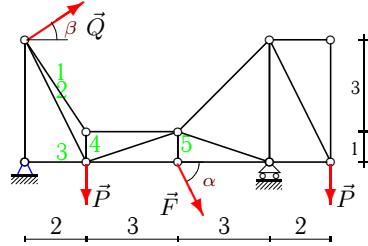
C5.
 $P = 60\text{кН}$,
 $Q = 40\text{кН}$,
 $F = 18\text{кН}$,
 $\alpha = 40^\circ$,
 $\beta = 30^\circ$.

Вариант 19

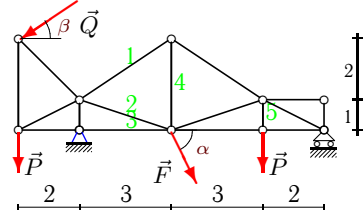
C5.
 $P = 70\text{кН}$,
 $Q = 50\text{кН}$,
 $F = 19\text{кН}$,
 $\alpha = 45^\circ$,
 $\beta = 45^\circ$.

Вариант 20

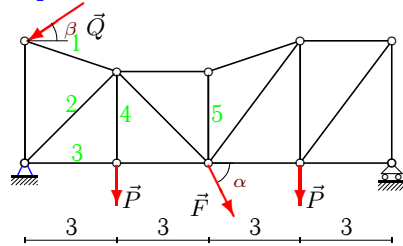
C5.
 $P = 50\text{кН}$,
 $Q = 80\text{кН}$,
 $F = 20\text{кН}$,
 $\alpha = 35^\circ$.

Вариант 21

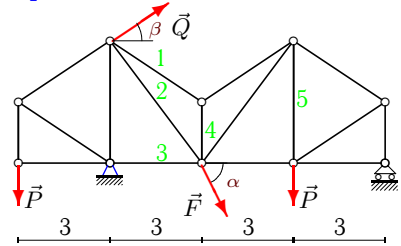
C5.
 $P = 50 \text{ кН}$,
 $Q = 50 \text{ кН}$,
 $F = 21 \text{ кН}$,
 $\alpha = 35^\circ$,
 $\beta = 15^\circ$.

Вариант 22

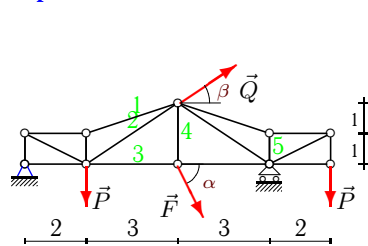
C5.
 $P = 60 \text{ кН}$,
 $Q = 90 \text{ кН}$,
 $F = 22 \text{ кН}$,
 $\alpha = 40^\circ$,
 $\beta = 30^\circ$.

Вариант 23

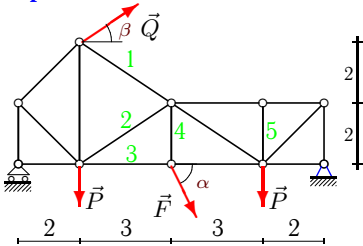
C5.
 $P = 40 \text{ кН}$,
 $Q = 90 \text{ кН}$,
 $F = 23 \text{ кН}$,
 $\alpha = 75^\circ$,
 $\beta = 15^\circ$.

Вариант 24

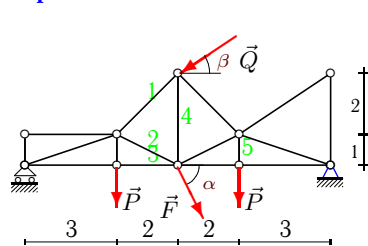
C5.
 $P = 30 \text{ кН}$,
 $Q = 50 \text{ кН}$,
 $F = 24 \text{ кН}$,
 $\alpha = 70^\circ$,
 $\beta = 30^\circ$.

Вариант 25

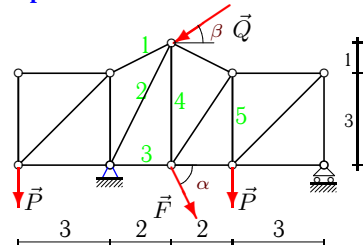
C5.
 $P = 80 \text{ кН}$,
 $Q = 80 \text{ кН}$,
 $F = 25 \text{ кН}$,
 $\alpha = 50^\circ$,
 $\beta = 15^\circ$.

Вариант 26

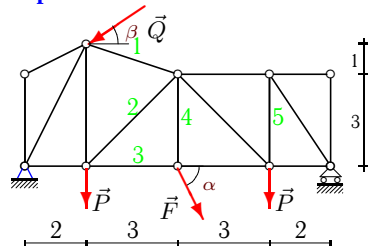
C5.
 $P = 80 \text{ кН}$,
 $Q = 80 \text{ кН}$,
 $F = 26 \text{ кН}$,
 $\alpha = 50^\circ$,
 $\beta = 30^\circ$.

Вариант 27

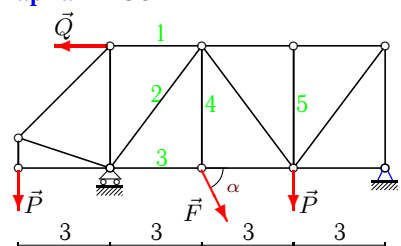
C5.
 $P = 70 \text{ кН}$,
 $Q = 80 \text{ кН}$,
 $F = 27 \text{ кН}$,
 $\alpha = 45^\circ$,
 $\beta = 30^\circ$.

Вариант 28

C5.
 $P = 20 \text{ кН}$,
 $Q = 80 \text{ кН}$,
 $F = 28 \text{ кН}$,
 $\alpha = 65^\circ$,
 $\beta = 30^\circ$.

Вариант 29

C5.
 $P = 80 \text{ кН}$,
 $Q = 30 \text{ кН}$,
 $F = 29 \text{ кН}$,
 $\alpha = 50^\circ$,
 $\beta = 15^\circ$.

Вариант 30

C5.
 $P = 80 \text{ кН}$,
 $Q = 60 \text{ кН}$,
 $F = 30 \text{ кН}$,
 $\alpha = 50^\circ$.

Отвѣты

	X_A	Y_A	R_B	S_1	S_2	S_3	S_4	S_5
1	34.343	67.607	97.177	-129.359	-76.784	145.765	91.471	26.196
2	54.405	44.947	104.064	46.431	-32.965	48.482	15.477	-44.947
3	-55.816	48.335	142.700	56.066	-127.466	-7.726	39.319	12.084
4	20.564	-1.097	207.877	459.411	-288.742	-128.918	276.795	60.000
5	14.984	93.446	155.943	-114.498	103.025	116.957	-51.205	80.000
6	-16.710	19.056	238.349	-34.568	289.766	-240.000	-30.864	80.000
7	-3.230	143.596	54.844	0.000	-122.634	109.688	54.844	41.871
8	-46.455	68.000	108.784	41.633	-207.731	197.071	-73.646	56.784
9	-26.535	124.177	150.844	-73.133	-76.055	158.766	95.022	0.000
10	54.886	80.347	142.844	-52.002	-49.396	134.534	8.192	80.347
11	-62.069	22.714	-49.757	-49.088	-39.006	27.004	9.526	22.714
12	32.250	-26.329	153.276	50.000	350.098	-332.132	-153.276	-0.000
13	53.165	88.576	137.073	-164.741	55.386	103.841	10.649	29.525
14	-54.769	48.849	34.181	39.528	-53.033	0.000	-11.349	-23.635
15	-65.172	46.667	89.052	82.674	-93.214	-46.569	52.288	90.000
16	52.326	-41.316	256.269	330.847	-325.207	-51.887	11.314	30.987
17	-57.997	2.741	-17.516	15.000	49.605	-56.274	14.722	-5.482
18	-48.430	78.984	32.586	30.762	23.730	3.430	21.293	16.552
19	21.920	27.812	160.979	-20.979	128.663	-70.000	-77.544	-13.906
20	-96.383	23.736	87.736	0.000	-29.670	114.185	50.000	0.000
21	-65.498	-7.572	106.676	-367.627	347.991	65.498	-305.884	12.045
22	61.089	184.317	-5.175	82.478	395.497	-426.974	-91.501	60.000
23	80.980	103.380	22.130	91.636	-72.278	-29.872	40.000	-1.420
24	-51.510	20.790	36.763	-78.466	74.144	29.010	-87.050	11.619
25	-93.344	20.099	138.347	-42.372	132.144	23.590	19.151	53.333
26	-85.995	109.671	30.246	-101.442	-83.857	84.896	19.917	0.000
27	50.190	78.761	120.331	-217.625	-231.553	360.992	198.486	70.000
28	57.449	123.430	-18.054	22.361	-126.819	-20.734	47.147	38.054
29	10.337	108.910	81.069	-26.856	-41.915	73.757	22.215	81.069
30	40.716	7.660	175.321	120.000	-119.151	11.491	22.981	0.000