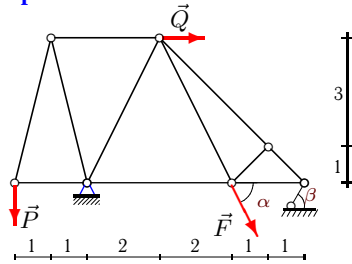


Расчет фермы

Кирсанов М.Н. Решебник. Теоретическая механика с. 45.

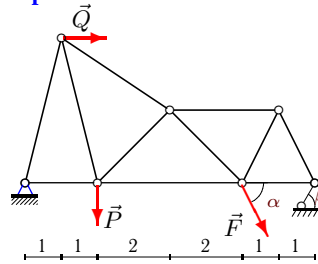
<p>Вариант 1</p> <p>C6. $P = 5\text{кН}$, $F = 1\text{кН}$, $\alpha = 35^\circ$, $\beta = 30^\circ$, $Q = 50\text{кН}$.</p>	<p>Вариант 2</p> <p>C6. $P = 40\text{кН}$, $F = 2\text{кН}$, $\alpha = 70^\circ$, $\beta = 60^\circ$, $Q = 50\text{кН}$.</p>
<p>Вариант 3</p> <p>C6. $P = 20\text{кН}$, $F = 3\text{кН}$, $\alpha = 50^\circ$, $\beta = 45^\circ$, $Q = 40\text{кН}$.</p>	<p>Вариант 4</p> <p>C6. $P = 15\text{кН}$, $F = 4\text{кН}$, $\alpha = 45^\circ$, $\beta = 30^\circ$, $Q = 40\text{кН}$.</p>
<p>Вариант 5</p> <p>C6. $P = 40\text{кН}$, $F = 5\text{кН}$, $\alpha = 70^\circ$, $\beta = 60^\circ$, $Q = 20\text{кН}$.</p>	<p>Вариант 6</p> <p>C6. $P = 5\text{кН}$, $F = 6\text{кН}$, $\alpha = 35^\circ$, $\beta = 30^\circ$, $Q = 10\text{кН}$.</p>
<p>Вариант 7</p> <p>C6. $P = 15\text{кН}$, $F = 7\text{кН}$, $\alpha = 45^\circ$, $\beta = 30^\circ$, $Q = 60\text{кН}$.</p>	<p>Вариант 8</p> <p>C6. $P = 40\text{кН}$, $F = 8\text{кН}$, $\alpha = 70^\circ$, $\beta = 60^\circ$, $Q = 50\text{кН}$.</p>
<p>Вариант 9</p> <p>C6. $P = 35\text{кН}$, $F = 9\text{кН}$, $\alpha = 65^\circ$, $\beta = 45^\circ$, $Q = 50\text{кН}$.</p>	<p>Вариант 10</p> <p>C6. $P = 15\text{кН}$, $F = 10\text{кН}$, $\alpha = 45^\circ$, $\beta = 30^\circ$, $Q = 40\text{кН}$.</p>

Вариант 11



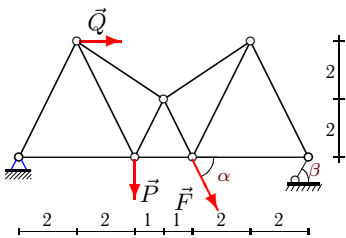
C6.
 $P = 25\text{кН}$,
 $F = 11\text{кН}$,
 $\alpha = 55^\circ$,
 $\beta = 45^\circ$,
 $Q = 20\text{кН}$.

Вариант 12



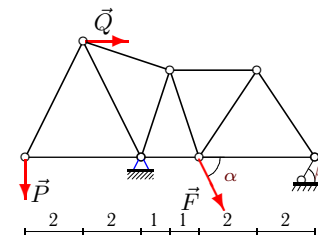
C6.
 $P = 15\text{кН}$,
 $F = 12\text{кН}$,
 $\alpha = 45^\circ$,
 $\beta = 30^\circ$,
 $Q = 20\text{кН}$.

Вариант 13



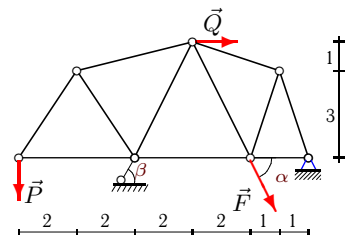
C6.
 $P = 20\text{кН}$,
 $F = 13\text{кН}$,
 $\alpha = 50^\circ$,
 $\beta = 45^\circ$,
 $Q = 50\text{кН}$.

Вариант 14



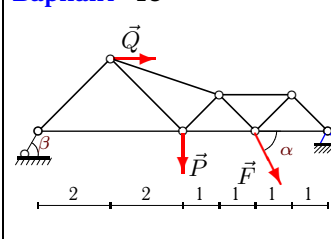
C6.
 $P = 10\text{кН}$,
 $F = 14\text{кН}$,
 $\alpha = 40^\circ$,
 $\beta = 30^\circ$,
 $Q = 50\text{кН}$.

Вариант 15



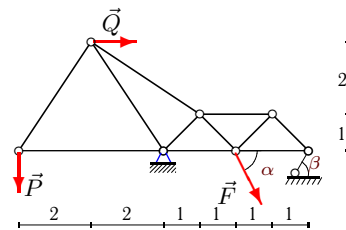
C6.
 $P = 20\text{кН}$,
 $F = 15\text{кН}$,
 $\alpha = 50^\circ$,
 $\beta = 45^\circ$,
 $Q = 30\text{кН}$.

Вариант 16



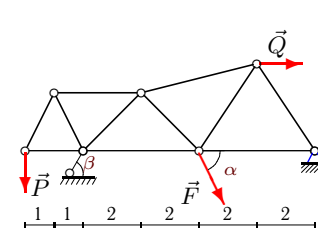
C6.
 $P = 5\text{кН}$,
 $F = 16\text{кН}$,
 $\alpha = 35^\circ$,
 $\beta = 30^\circ$,
 $Q = 10\text{кН}$.

Вариант 17



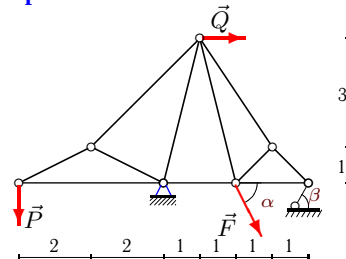
C6.
 $P = 5\text{кН}$,
 $F = 17\text{кН}$,
 $\alpha = 35^\circ$,
 $\beta = 30^\circ$,
 $Q = 10\text{кН}$.

Вариант 18



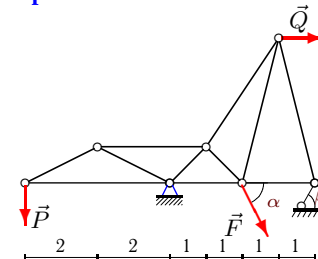
C6.
 $P = 5\text{кН}$,
 $F = 18\text{кН}$,
 $\alpha = 35^\circ$,
 $\beta = 30^\circ$,
 $Q = 60\text{кН}$.

Вариант 19



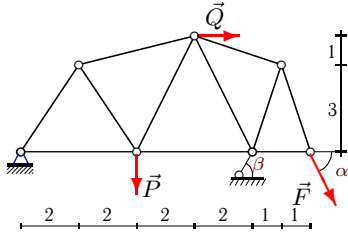
C6.
 $P = 5\text{кН}$,
 $F = 19\text{кН}$,
 $\alpha = 35^\circ$,
 $\beta = 30^\circ$,
 $Q = 10\text{кН}$.

Вариант 20



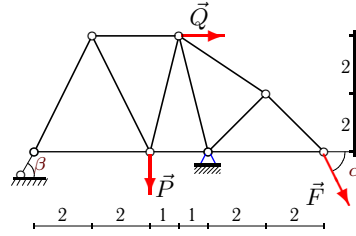
C6.
 $P = 40\text{кН}$,
 $F = 20\text{кН}$,
 $\alpha = 70^\circ$,
 $\beta = 60^\circ$,
 $Q = 10\text{кН}$.

Вариант 21



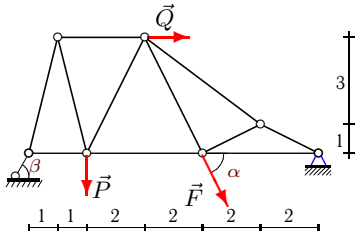
C6.
 $P = 25 \text{ кН}$,
 $F = 21 \text{ кН}$,
 $\alpha = 55^\circ$,
 $\beta = 45^\circ$,
 $Q = 30 \text{ кН}$.

Вариант 22



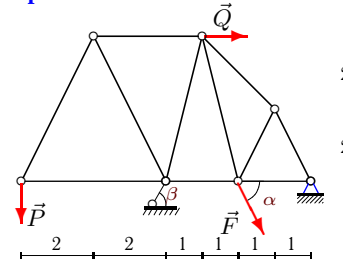
C6.
 $P = 20 \text{ кН}$,
 $F = 22 \text{ кН}$,
 $\alpha = 50^\circ$,
 $\beta = 45^\circ$,
 $Q = 50 \text{ кН}$.

Вариант 23



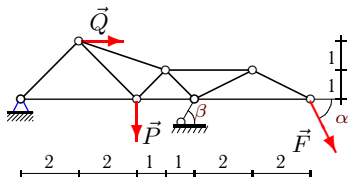
C6.
 $P = 25 \text{ кН}$,
 $F = 23 \text{ кН}$,
 $\alpha = 55^\circ$,
 $\beta = 45^\circ$,
 $Q = 60 \text{ кН}$.

Вариант 24



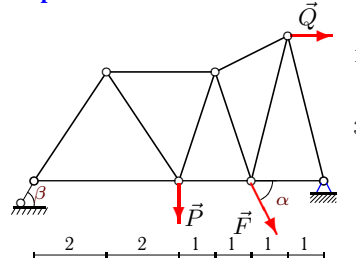
C6.
 $P = 5 \text{ кН}$,
 $F = 24 \text{ кН}$,
 $\alpha = 35^\circ$,
 $\beta = 30^\circ$,
 $Q = 10 \text{ кН}$.

Вариант 25



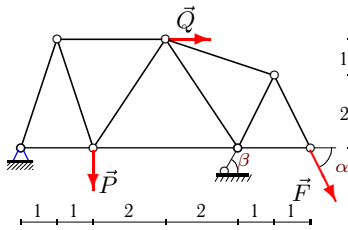
C6.
 $P = 5 \text{ кН}$,
 $F = 25 \text{ кН}$,
 $\alpha = 35^\circ$,
 $\beta = 30^\circ$,
 $Q = 50 \text{ кН}$.

Вариант 26



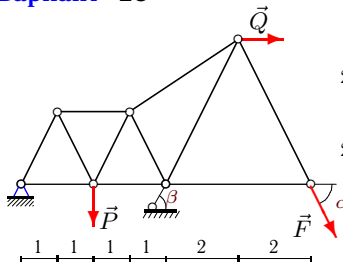
C6.
 $P = 10 \text{ кН}$,
 $F = 26 \text{ кН}$,
 $\alpha = 40^\circ$,
 $\beta = 30^\circ$,
 $Q = 10 \text{ кН}$.

Вариант 27



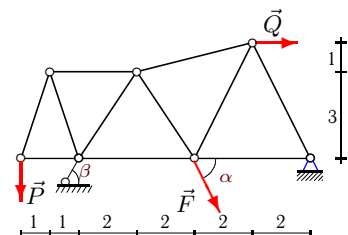
C6.
 $P = 25 \text{ кН}$,
 $F = 27 \text{ кН}$,
 $\alpha = 55^\circ$,
 $\beta = 45^\circ$,
 $Q = 20 \text{ кН}$.

Вариант 28



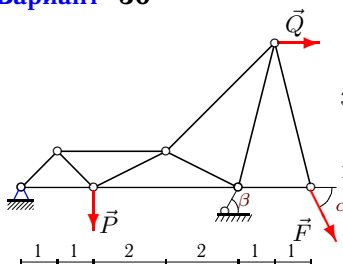
C6.
 $P = 45 \text{ кН}$,
 $F = 28 \text{ кН}$,
 $\alpha = 75^\circ$,
 $\beta = 60^\circ$,
 $Q = 40 \text{ кН}$.

Вариант 29



C6.
 $P = 5 \text{ кН}$,
 $F = 29 \text{ кН}$,
 $\alpha = 35^\circ$,
 $\beta = 30^\circ$,
 $Q = 60 \text{ кН}$.

Вариант 30



C6.
 $P = 25 \text{ кН}$,
 $F = 30 \text{ кН}$,
 $\alpha = 55^\circ$,
 $\beta = 45^\circ$,
 $Q = 20 \text{ кН}$.

Отвѣты

	X_A	Y_A	R_B	U_1	U_2	U_3	O_1	O_2	O_3	O_4	D_1	D_2	D_3	D_4
1	-8.180	30.191	-49.235	-2.500	42.766	11.947	5.590	-56.921	-40.255	-36.285	14.534	12.246	-31.220	36.285
2	-50.083	42.920	-1.201	-40.000	-28.457	-1.294	56.569	80.000	69.643	1.250	-56.569	-3.264	27.887	-27.718
3	-29.630	34.596	-17.392	6.149	-4.596	-2.668	13.750	-41.296	9.193	5.139	6.898	19.559	-45.676	-5.139
4	-38.783	20.164	-4.672	3.267	13.042	-25.340	2.462	-51.576	-36.437	-24.234	21.851	-6.406	-32.264	38.083
5	-28.504	32.931	13.588	-0.910	-15.027	-0.639	-13.156	-10.607	4.235	5.253	6.578	38.143	-34.192	-2.627
6	-40.183	-6.147	29.177	37.110	34.447	4.055	6.873	-10.897	4.963	3.547	1.743	4.867	-9.924	-7.804
7	-62.741	21.225	-2.550	-5.000	-18.642	-41.516	15.811	10.000	-35.005	-30.017	-15.811	19.560	-9.357	18.010
8	-79.686	0.839	53.900	-26.667	-78.611	-78.847	48.074	4.518	-1.678	-1.187	-49.791	-5.869	7.467	1.187
9	-82.698	14.263	40.862	111.223	100.854	86.682	-31.892	-36.082	-73.097	-64.609	6.378	35.942	2.659	12.922
10	4.148	51.642	-59.142	41.362	19.362	2.357	31.171	-27.216	12.778	8.498	-18.341	36.224	-45.314	-13.355
11	-37.316	23.004	15.566	-6.250	23.818	22.014	25.769	12.500	-15.566	-15.566	-25.769	2.232	10.074	0.000
12	-63.324	3.371	40.228	64.167	75.066	44.895	-3.475	-31.276	-20.114	-22.488	21.358	-8.089	-16.445	22.488
13	-92.331	-4.017	48.048	90.323	122.290	50.963	4.491	-82.898	-61.250	-37.985	46.920	-24.560	-64.837	75.971
14	-112.108	-10.667	59.333	-5.000	108.552	71.161	11.180	-50.596	-39.555	-35.655	6.708	4.920	-21.785	35.655
15	-56.805	14.327	24.273	-13.333	-38.582	-52.030	24.037	23.561	-9.061	-15.102	-17.169	-3.218	0.032	12.082
16	-27.080	11.883	4.589	-1.680	12.498	-15.197	-3.245	-23.067	-23.766	-16.805	13.560	-6.489	-3.826	16.805
17	-36.700	7.375	14.751	-3.333	39.076	20.150	6.009	-7.211	-14.751	-10.430	-1.202	-9.016	3.359	10.430
18	-55.540	26.412	-22.176	-2.500	-1.883	-37.932	5.590	5.000	30.656	-31.743	-5.590	22.752	-12.237	22.808
19	-43.662	5.449	20.898	-10.000	38.774	28.547	11.180	9.428	-15.070	-14.777	3.727	-7.335	13.387	-2.955
20	-4.945	79.397	-23.790	-80.000	-115.658	-17.046	89.443	160.000	58.559	21.237	-89.443	-55.716	124.621	-71.460
21	-91.048	-6.801	69.300	86.514	68.347	6.311	8.173	8.011	10.880	18.133	-5.838	33.382	-39.401	-14.506
22	-26.239	74.755	-53.602	18.951	-14.475	-2.712	42.376	37.902	24.306	23.834	-42.376	59.684	-73.581	-4.767
23	-76.728	40.304	5.001	-2.652	-12.500	3.880	-3.645	-1.768	-80.609	-90.123	3.645	23.997	30.077	-18.025
24	-41.581	11.883	13.766	-2.500	-16.451	-35.640	5.590	5.000	-11.203	-13.286	-5.590	-1.941	10.107	4.429
25	-146.514	-24.560	87.798	121.955	68.716	-8.200	34.733	-1.393	57.358	32.064	-34.110	41.181	-41.804	-32.064
26	-37.154	22.534	8.356	-4.451	-3.607	-31.520	-5.021	-5.571	-1.619	-23.228	5.021	6.137	-6.900	23.974
27	-83.309	-0.706	67.632	83.074	65.702	4.428	0.744	0.470	19.983	24.728	-0.744	30.894	-38.489	-17.663
28	-114.561	-44.546	134.629	92.288	25.242	-6.276	49.804	44.546	120.869	30.238	-49.804	100.115	-25.156	-105.198
29	-57.024	37.067	-30.866	-1.667	9.776	-38.491	5.270	3.333	27.016	-41.442	-5.270	24.558	-16.683	34.116
30	-91.640	-4.858	76.980	86.782	22.207	11.064	6.871	9.716	60.881	25.331	-6.871	66.765	29.497	-69.706