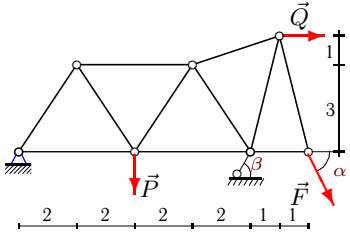
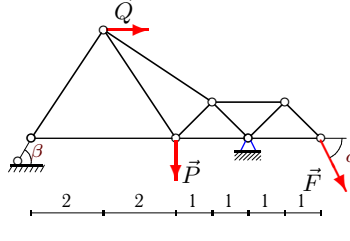
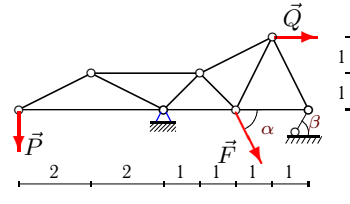
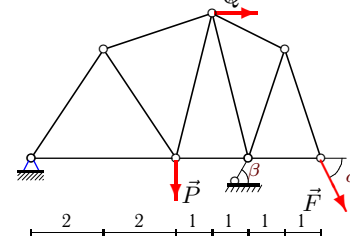
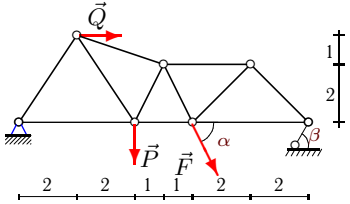
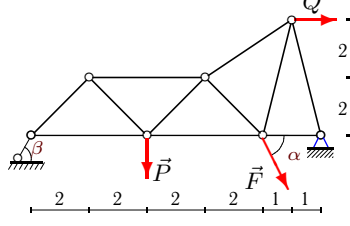
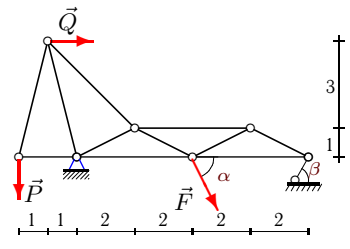
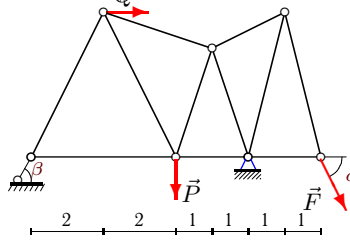
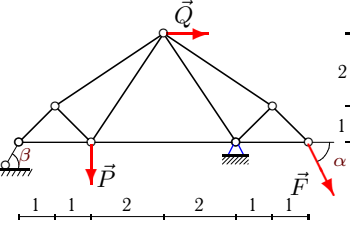
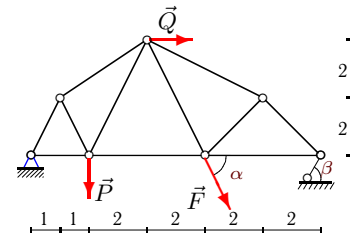
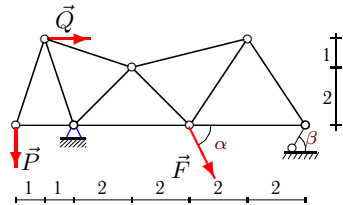


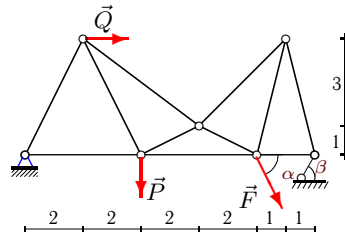
Расчет фермы

Кирсанов М.Н. Решебник. Теоретическая механика с. 45.

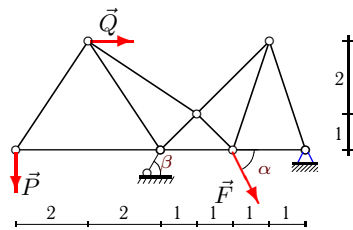
<p>Вариант 1</p>  <p>C6. $P = 25\text{кН}$, $F = 1\text{кН}$, $\alpha = 55^\circ$, $\beta = 45^\circ$, $Q = 30\text{кН}$.</p>	<p>Вариант 2</p>  <p>C6. $P = 25\text{кН}$, $F = 2\text{кН}$, $\alpha = 55^\circ$, $\beta = 45^\circ$, $Q = 10\text{кН}$.</p>
<p>Вариант 3</p>  <p>C6. $P = 45\text{кН}$, $F = 3\text{кН}$, $\alpha = 75^\circ$, $\beta = 60^\circ$, $Q = 10\text{кН}$.</p>	<p>Вариант 4</p>  <p>C6. $P = 10\text{кН}$, $F = 4\text{кН}$, $\alpha = 40^\circ$, $\beta = 30^\circ$, $Q = 10\text{кН}$.</p>
<p>Вариант 5</p>  <p>C6. $P = 15\text{кН}$, $F = 5\text{кН}$, $\alpha = 45^\circ$, $\beta = 30^\circ$, $Q = 50\text{кН}$.</p>	<p>Вариант 6</p>  <p>C6. $P = 25\text{кН}$, $F = 6\text{кН}$, $\alpha = 55^\circ$, $\beta = 45^\circ$, $Q = 30\text{кН}$.</p>
<p>Вариант 7</p>  <p>C6. $P = 45\text{кН}$, $F = 7\text{кН}$, $\alpha = 75^\circ$, $\beta = 60^\circ$, $Q = 60\text{кН}$.</p>	<p>Вариант 8</p>  <p>C6. $P = 15\text{кН}$, $F = 8\text{кН}$, $\alpha = 45^\circ$, $\beta = 30^\circ$, $Q = 10\text{кН}$.</p>
<p>Вариант 9</p>  <p>C6. $P = 10\text{кН}$, $F = 9\text{кН}$, $\alpha = 40^\circ$, $\beta = 30^\circ$, $Q = 20\text{кН}$.</p>	<p>Вариант 10</p>  <p>C6. $P = 45\text{кН}$, $F = 10\text{кН}$, $\alpha = 75^\circ$, $\beta = 60^\circ$, $Q = 60\text{кН}$.</p>

Вариант 11

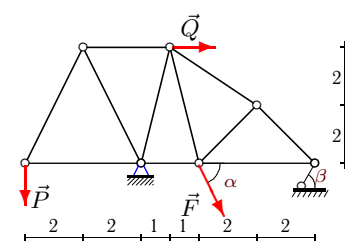
C6.
 $P = 40 \text{ кН}$,
 $F = 11 \text{ кН}$,
 $\alpha = 70^\circ$,
 $\beta = 60^\circ$,
 $Q = 60 \text{ кН}$.

Вариант 12

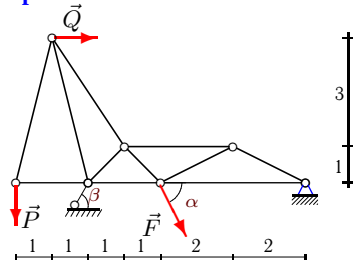
C6.
 $P = 5 \text{ кН}$,
 $F = 12 \text{ кН}$,
 $\alpha = 35^\circ$,
 $\beta = 30^\circ$,
 $Q = 30 \text{ кН}$.

Вариант 13

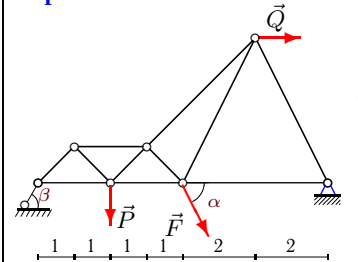
C6.
 $P = 45 \text{ кН}$,
 $F = 13 \text{ кН}$,
 $\alpha = 75^\circ$,
 $\beta = 60^\circ$,
 $Q = 10 \text{ кН}$.

Вариант 14

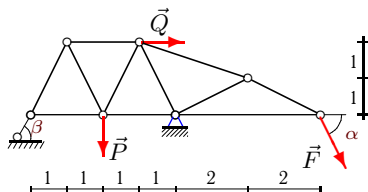
C6.
 $P = 15 \text{ кН}$,
 $F = 14 \text{ кН}$,
 $\alpha = 45^\circ$,
 $\beta = 30^\circ$,
 $Q = 50 \text{ кН}$.

Вариант 15

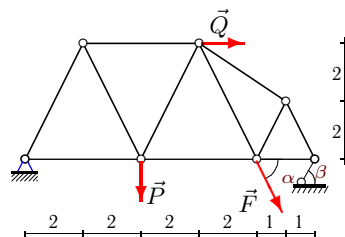
C6.
 $P = 45 \text{ кН}$,
 $F = 15 \text{ кН}$,
 $\alpha = 75^\circ$,
 $\beta = 60^\circ$,
 $Q = 40 \text{ кН}$.

Вариант 16

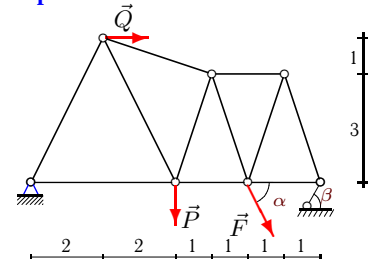
C6.
 $P = 10 \text{ кН}$,
 $F = 16 \text{ кН}$,
 $\alpha = 40^\circ$,
 $\beta = 30^\circ$,
 $Q = 40 \text{ кН}$.

Вариант 17

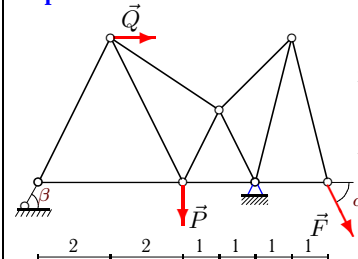
C6.
 $P = 35 \text{ кН}$,
 $F = 17 \text{ кН}$,
 $\alpha = 65^\circ$,
 $\beta = 45^\circ$,
 $Q = 40 \text{ кН}$.

Вариант 18

C6.
 $P = 40 \text{ кН}$,
 $F = 18 \text{ кН}$,
 $\alpha = 70^\circ$,
 $\beta = 60^\circ$,
 $Q = 30 \text{ кН}$.

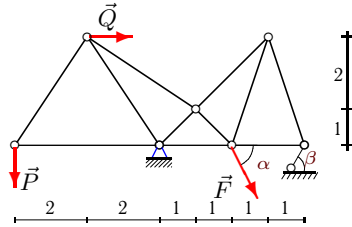
Вариант 19

C6.
 $P = 20 \text{ кН}$,
 $F = 19 \text{ кН}$,
 $\alpha = 50^\circ$,
 $\beta = 45^\circ$,
 $Q = 10 \text{ кН}$.

Вариант 20

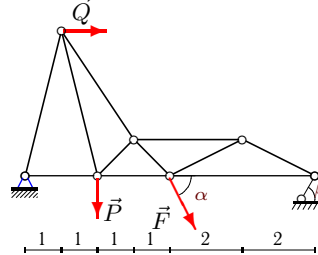
C6.
 $P = 45 \text{ кН}$,
 $F = 20 \text{ кН}$,
 $\alpha = 75^\circ$,
 $\beta = 60^\circ$,
 $Q = 10 \text{ кН}$.

Вариант 21



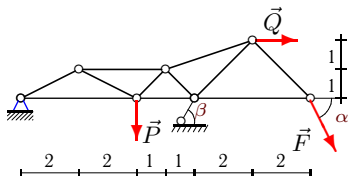
C6.
 $P = 25\text{кН}$,
 $F = 21\text{кН}$,
 $\alpha = 55^\circ$,
 $\beta = 45^\circ$,
 $Q = 10\text{кН}$.

Вариант 22



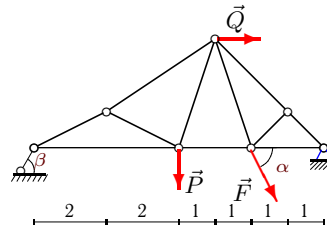
C6.
 $P = 20\text{кН}$,
 $F = 22\text{кН}$,
 $\alpha = 50^\circ$,
 $\beta = 45^\circ$,
 $Q = 40\text{кН}$.

Вариант 23



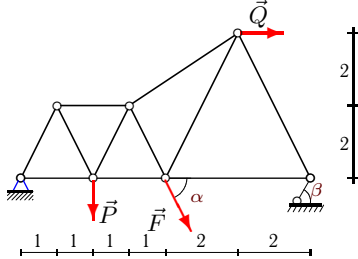
C6.
 $P = 15\text{кН}$,
 $F = 23\text{кН}$,
 $\alpha = 45^\circ$,
 $\beta = 30^\circ$,
 $Q = 50\text{кН}$.

Вариант 24



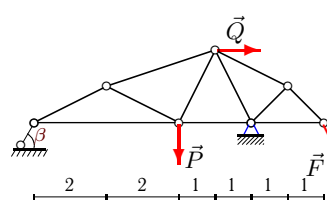
C6.
 $P = 5\text{кН}$,
 $F = 24\text{кН}$,
 $\alpha = 35^\circ$,
 $\beta = 30^\circ$,
 $Q = 10\text{кН}$.

Вариант 25



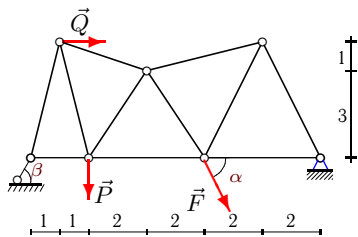
C6.
 $P = 15\text{кН}$,
 $F = 25\text{кН}$,
 $\alpha = 45^\circ$,
 $\beta = 30^\circ$,
 $Q = 40\text{кН}$.

Вариант 26



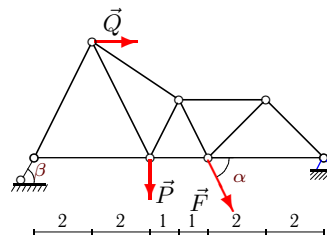
C6.
 $P = 25\text{кН}$,
 $F = 26\text{кН}$,
 $\alpha = 55^\circ$,
 $\beta = 45^\circ$,
 $Q = 10\text{кН}$.

Вариант 27



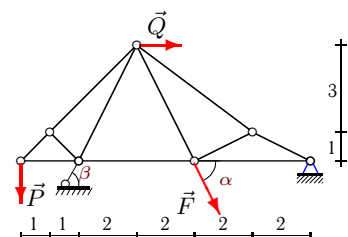
C6.
 $P = 10\text{кН}$,
 $F = 27\text{кН}$,
 $\alpha = 40^\circ$,
 $\beta = 30^\circ$,
 $Q = 60\text{кН}$.

Вариант 28



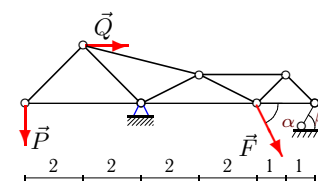
C6.
 $P = 30\text{кН}$,
 $F = 28\text{кН}$,
 $\alpha = 60^\circ$,
 $\beta = 45^\circ$,
 $Q = 50\text{кН}$.

Вариант 29



C6.
 $P = 30\text{кН}$,
 $F = 29\text{кН}$,
 $\alpha = 60^\circ$,
 $\beta = 45^\circ$,
 $Q = 60\text{кН}$.

Вариант 30



C6.
 $P = 20\text{кН}$,
 $F = 30\text{кН}$,
 $\alpha = 50^\circ$,
 $\beta = 45^\circ$,
 $Q = 30\text{кН}$.

Ответы

	X_A	Y_A	R_B	U_1	U_2	U_3	O_1	O_2	O_3	O_4	D_1	D_2	D_3	D_4
1	-59.098	-2.705	40.339	57.294	37.021	0.369	3.251	3.606	34.969	0.844	-3.251	33.297	-20.007	-12.243
2	-13.934	23.851	3.942	-0.929	6.149	-0.491	-3.350	-29.673	3.277	2.317	23.132	8.136	-31.414	-2.317
3	11.481	86.449	-44.515	-90.000	-150.032	-41.533	100.623	180.000	72.376	43.101	-100.623	-58.618	104.392	-79.289
4	-42.096	-4.190	33.523	39.302	34.358	2.207	5.036	4.819	1.643	2.710	-3.205	13.056	-15.384	-1.936
5	-93.583	-4.586	46.243	90.526	99.618	63.169	5.511	-59.477	-46.243	-32.698	17.093	0.869	-21.898	32.698
6	-37.424	25.932	5.633	0.000	-17.034	-30.941	-5.633	-7.966	24.567	-26.730	5.633	29.723	-10.451	12.683
7	-74.589	29.631	25.554	-11.250	133.850	57.039	46.385	-70.711	-88.523	-49.486	5.154	-77.437	-34.367	49.486
8	-9.504	24.209	-7.105	4.377	-1.434	4.243	3.972	-8.156	3.614	5.831	-1.088	16.837	-17.852	-7.497
9	-17.781	21.047	-10.523	3.852	-4.569	1.109	7.441	7.589	8.343	8.181	-1.488	13.283	-23.905	-1.636
10	-84.987	15.864	44.797	92.919	78.351	61.194	-17.736	-14.299	-57.833	-54.865	8.868	41.443	-3.659	18.288
11	-73.963	32.668	20.402	-13.333	56.631	21.980	42.164	-39.528	-29.139	-21.235	-28.988	-7.309	-20.363	29.729
12	-73.616	-7.623	39.013	69.804	107.875	38.663	8.523	-44.753	-18.391	-20.107	21.498	-31.816	-57.305	33.511
13	-64.621	-31.221	102.513	-30.000	-167.478	-75.028	54.083	108.167	44.154	32.910	-126.194	22.941	106.066	-65.821
14	-106.029	-1.734	53.266	-7.500	86.846	72.763	16.771	15.000	-38.411	-37.665	-16.771	17.249	4.714	7.533
15	-68.704	16.496	49.644	-11.250	3.171	-35.711	46.385	-50.478	-65.985	-36.887	-3.092	-56.558	-2.839	36.887
16	-39.513	27.642	-14.715	5.386	-19.329	-25.692	10.405	14.715	34.953	-30.905	-10.405	24.547	10.405	3.272
17	-29.277	68.314	-25.325	8.954	-26.454	-23.630	20.021	17.907	38.978	34.452	-20.021	59.152	-72.933	-6.890
18	-60.135	15.383	47.957	67.826	63.209	44.744	-17.199	-15.383	-37.436	-46.434	17.199	27.523	-4.306	23.217
19	-48.129	8.639	36.651	52.448	59.194	34.555	-9.658	-23.576	-17.277	-27.318	17.994	4.117	-11.976	27.318
20	-16.270	62.425	2.187	-0.146	-8.859	0.347	-2.117	-21.442	18.214	19.913	15.415	34.896	-33.795	-33.188
21	-13.146	51.101	-12.585	-16.667	-40.753	-11.865	30.046	50.478	12.585	9.380	-63.698	2.685	49.497	-18.761
22	-87.568	3.426	47.272	88.424	197.847	100.279	-3.532	-120.319	-133.706	-74.744	106.725	-118.141	-23.438	74.744
23	-159.400	-22.509	107.545	114.382	31.855	0.000	50.332	90.036	130.487	23.000	-50.332	53.046	5.310	-81.355
24	-33.455	16.574	4.383	0.587	-1.810	-16.881	-4.900	-4.515	-23.440	-23.440	-0.700	5.600	14.510	0.000
25	-114.123	0.089	65.178	114.168	106.756	72.740	-0.099	-0.089	13.361	-36.435	0.099	16.671	-8.385	28.149
26	-22.814	48.397	-2.969	-2.099	-15.649	-6.385	4.694	5.311	31.749	30.120	-0.939	28.420	-46.173	-10.040
27	-64.994	36.413	-18.116	13.424	16.945	-46.788	9.337	-63.787	-42.896	-40.711	11.455	-1.338	-35.409	52.343
28	-71.699	46.549	10.889	-3.850	46.549	-25.150	-8.608	-104.019	-93.098	-65.831	73.118	-39.577	-24.933	65.831
29	-94.557	35.057	28.365	-30.000	-40.029	-24.443	42.426	42.426	-70.115	-78.391	-0.000	-22.425	35.918	-15.678
30	-61.271	30.994	16.953	-20.000	33.259	23.975	28.284	13.744	-23.975	-16.953	-32.998	-17.129	24.583	16.953