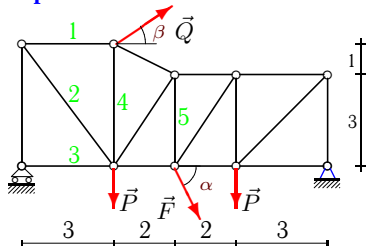
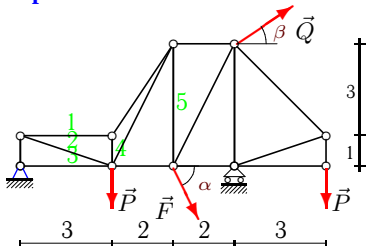
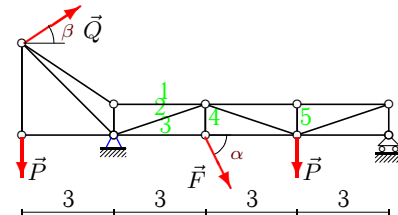
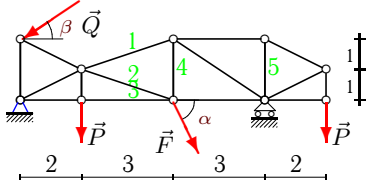
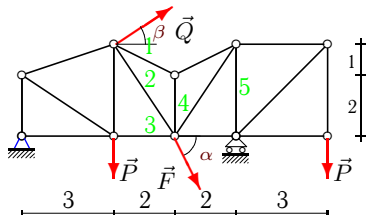
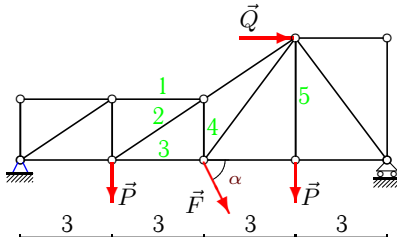
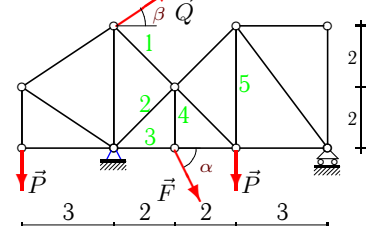
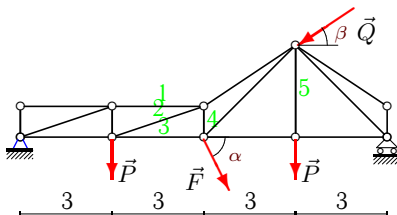
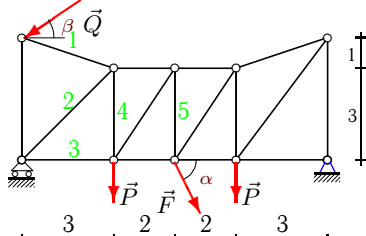
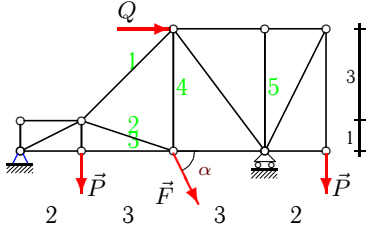
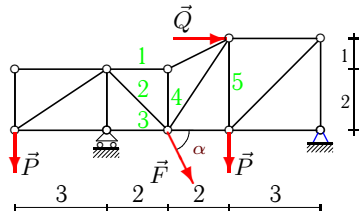


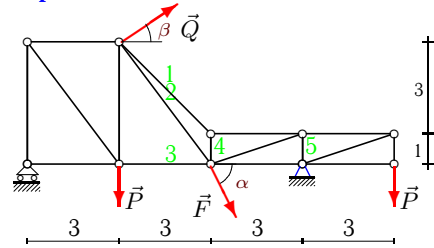
Расчет фермы

Кирсанов М.Н. Решебник. Теоретическая механика с. 37.

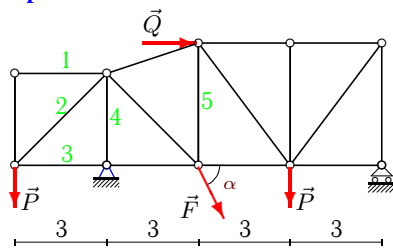
| | |
|--|---|
| <p>Вариант 1</p>  <p>C5. $P = 40\text{кН}$, $Q = 80\text{кН}$, $F = 24\text{кН}$, $\alpha = 75^\circ$, $\beta = 30^\circ$.</p> | <p>Вариант 2</p>  <p>C5. $P = 40\text{кН}$, $Q = 50\text{кН}$, $F = 34\text{кН}$, $\alpha = 75^\circ$, $\beta = 15^\circ$.</p> |
| <p>Вариант 3</p>  <p>C5. $P = 80\text{кН}$, $Q = 30\text{кН}$, $F = 56\text{кН}$, $\alpha = 50^\circ$, $\beta = 30^\circ$.</p> | <p>Вариант 4</p>  <p>C5. $P = 20\text{кН}$, $Q = 90\text{кН}$, $F = 49\text{кН}$, $\alpha = 65^\circ$, $\beta = 15^\circ$.</p> |
| <p>Вариант 5</p>  <p>C5. $P = 20\text{кН}$, $Q = 50\text{кН}$, $F = 62\text{кН}$, $\alpha = 65^\circ$, $\beta = 15^\circ$.</p> | <p>Вариант 6</p>  <p>C5. $P = 80\text{кН}$, $Q = 60\text{кН}$, $F = 83\text{кН}$, $\alpha = 50^\circ$.</p> |
| <p>Вариант 7</p>  <p>C5. $P = 10\text{кН}$, $Q = 50\text{кН}$, $F = 88\text{кН}$, $\alpha = 60^\circ$, $\beta = 30^\circ$.</p> | <p>Вариант 8</p>  <p>C5. $P = 70\text{кН}$, $Q = 30\text{кН}$, $F = 103\text{кН}$, $\alpha = 45^\circ$, $\beta = 15^\circ$.</p> |
| <p>Вариант 9</p>  <p>C5. $P = 50\text{кН}$, $Q = 60\text{кН}$, $F = 105\text{кН}$, $\alpha = 35^\circ$, $\beta = 30^\circ$.</p> | <p>Вариант 10</p>  <p>C5. $P = 60\text{кН}$, $Q = 90\text{кН}$, $F = 10\text{кН}$, $\alpha = 40^\circ$.</p> |

Вариант 11

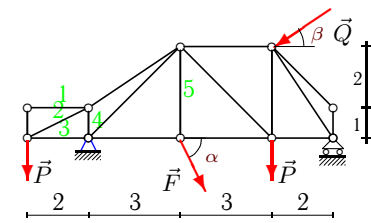
C5.
 $P = 70 \text{ кН}$,
 $Q = 70 \text{ кН}$,
 $F = 11 \text{ кН}$,
 $\alpha = 45^\circ$.

Вариант 12

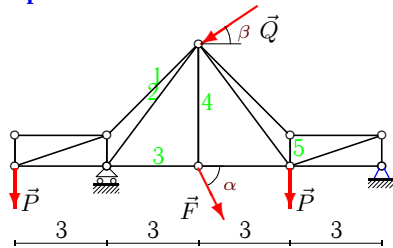
C5.
 $P = 60 \text{ кН}$,
 $Q = 30 \text{ кН}$,
 $F = 12 \text{ кН}$,
 $\alpha = 40^\circ$,
 $\beta = 45^\circ$.

Вариант 13

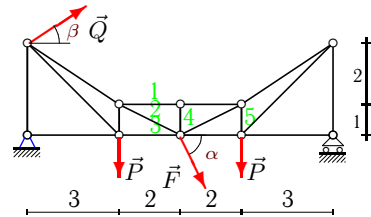
C5.
 $P = 50 \text{ кН}$,
 $Q = 90 \text{ кН}$,
 $F = 13 \text{ кН}$,
 $\alpha = 35^\circ$.

Вариант 14

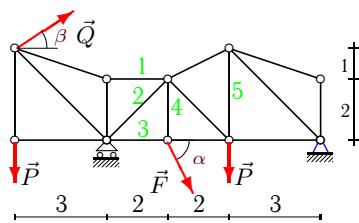
C5.
 $P = 40 \text{ кН}$,
 $Q = 30 \text{ кН}$,
 $F = 14 \text{ кН}$,
 $\alpha = 75^\circ$,
 $\beta = 30^\circ$.

Вариант 15

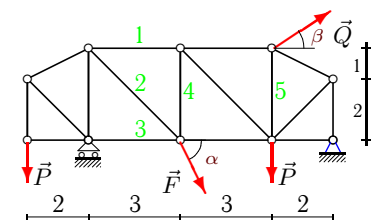
C5.
 $P = 60 \text{ кН}$,
 $Q = 50 \text{ кН}$,
 $F = 15 \text{ кН}$,
 $\alpha = 40^\circ$,
 $\beta = 45^\circ$.

Вариант 16

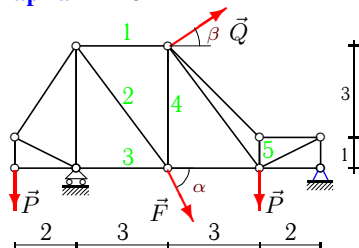
C5.
 $P = 30 \text{ кН}$,
 $Q = 90 \text{ кН}$,
 $F = 16 \text{ кН}$,
 $\alpha = 70^\circ$,
 $\beta = 15^\circ$.

Вариант 17

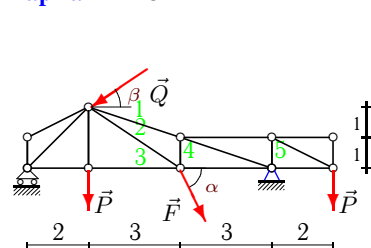
C5.
 $P = 70 \text{ кН}$,
 $Q = 80 \text{ кН}$,
 $F = 17 \text{ кН}$,
 $\alpha = 45^\circ$,
 $\beta = 45^\circ$.

Вариант 18

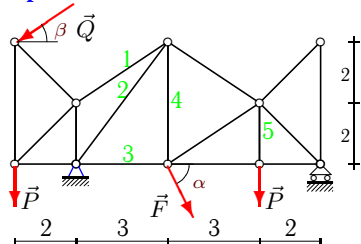
C5.
 $P = 60 \text{ кН}$,
 $Q = 70 \text{ кН}$,
 $F = 18 \text{ кН}$,
 $\alpha = 40^\circ$,
 $\beta = 45^\circ$.

Вариант 19

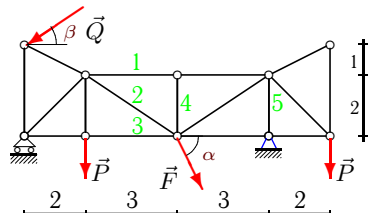
C5.
 $P = 30 \text{ кН}$,
 $Q = 40 \text{ кН}$,
 $F = 19 \text{ кН}$,
 $\alpha = 70^\circ$,
 $\beta = 45^\circ$.

Вариант 20

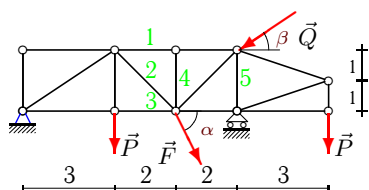
C5.
 $P = 10 \text{ кН}$,
 $Q = 90 \text{ кН}$,
 $F = 20 \text{ кН}$,
 $\alpha = 60^\circ$,
 $\beta = 45^\circ$.

Вариант 21

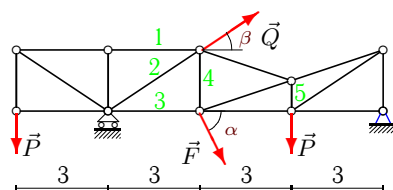
C5.
 $P = 60 \text{ кН}$,
 $Q = 30 \text{ кН}$,
 $F = 21 \text{ кН}$,
 $\alpha = 40^\circ$,
 $\beta = 30^\circ$.

Вариант 22

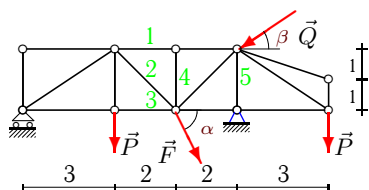
C5.
 $P = 90 \text{ кН}$,
 $Q = 80 \text{ кН}$,
 $F = 22 \text{ кН}$,
 $\alpha = 55^\circ$,
 $\beta = 45^\circ$.

Вариант 23

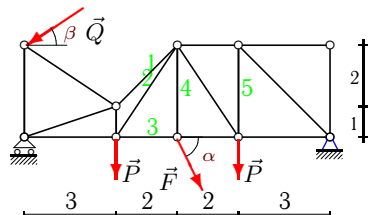
C5.
 $P = 10 \text{ кН}$,
 $Q = 50 \text{ кН}$,
 $F = 23 \text{ кН}$,
 $\alpha = 60^\circ$,
 $\beta = 15^\circ$.

Вариант 24

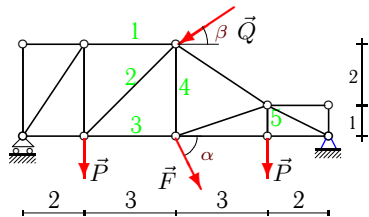
C5.
 $P = 10 \text{ кН}$,
 $Q = 60 \text{ кН}$,
 $F = 24 \text{ кН}$,
 $\alpha = 60^\circ$,
 $\beta = 45^\circ$.

Вариант 25

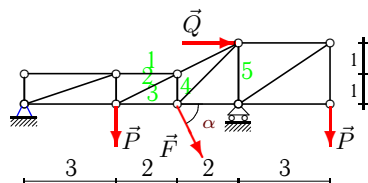
C5.
 $P = 60 \text{ кН}$,
 $Q = 60 \text{ кН}$,
 $F = 25 \text{ кН}$,
 $\alpha = 40^\circ$,
 $\beta = 45^\circ$.

Вариант 26

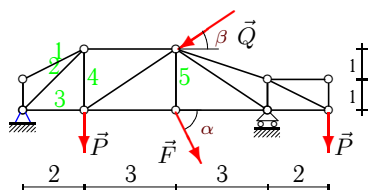
C5.
 $P = 80 \text{ кН}$,
 $Q = 40 \text{ кН}$,
 $F = 26 \text{ кН}$,
 $\alpha = 50^\circ$,
 $\beta = 30^\circ$.

Вариант 27

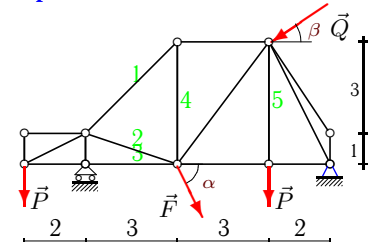
C5.
 $P = 30 \text{ кН}$,
 $Q = 50 \text{ кН}$,
 $F = 27 \text{ кН}$,
 $\alpha = 70^\circ$,
 $\beta = 30^\circ$.

Вариант 28

C5.
 $P = 90 \text{ кН}$,
 $Q = 90 \text{ кН}$,
 $F = 28 \text{ кН}$,
 $\alpha = 55^\circ$.

Вариант 29

C5.
 $P = 40 \text{ кН}$,
 $Q = 40 \text{ кН}$,
 $F = 29 \text{ кН}$,
 $\alpha = 75^\circ$,
 $\beta = 15^\circ$.

Вариант 30

C5.
 $P = 90 \text{ кН}$,
 $Q = 70 \text{ кН}$,
 $F = 30 \text{ кН}$,
 $\alpha = 55^\circ$,
 $\beta = 45^\circ$.

Ответы

| | X_A | Y_A | R_B | S_1 | S_2 | S_3 | S_4 | S_5 |
|----|----------|---------|---------|----------|----------|----------|----------|----------|
| 1 | -75.494 | 67.304 | -4.122 | 3.091 | -5.152 | 0.000 | 73.095 | -4.122 |
| 2 | -57.096 | -12.500 | 112.401 | 37.501 | -39.529 | 57.096 | 56.251 | -52.500 |
| 3 | -61.977 | 133.272 | 54.626 | 117.058 | -215.895 | 123.755 | 42.898 | 0.000 |
| 4 | 66.225 | 71.680 | 36.022 | -4.252 | 85.515 | -56.385 | 17.367 | -10.000 |
| 5 | -74.499 | -9.182 | 92.432 | -47.440 | 5.980 | 65.317 | -42.432 | -72.432 |
| 6 | -113.351 | 91.791 | 131.791 | -137.686 | -21.256 | 268.724 | -91.791 | 80.000 |
| 7 | -87.301 | 23.264 | 47.947 | -50.631 | -104.744 | 153.866 | 76.210 | 83.906 |
| 8 | -43.854 | 115.602 | 104.995 | -346.805 | -144.205 | 527.464 | -276.805 | 70.000 |
| 9 | -34.049 | 59.328 | 130.897 | 54.772 | -118.196 | 83.577 | 100.897 | 50.897 |
| 10 | -97.660 | -12.590 | 139.017 | 85.895 | -37.481 | 72.481 | 18.280 | 0.000 |
| 11 | -77.778 | 42.222 | 105.556 | 69.444 | 50.284 | -105.000 | 34.722 | 27.778 |
| 12 | -30.406 | 107.499 | -0.999 | 53.036 | -96.610 | -0.749 | 37.502 | -47.499 |
| 13 | -100.649 | 48.304 | 59.152 | 0.000 | 70.711 | -50.000 | -48.304 | -3.772 |
| 14 | 22.357 | 81.945 | 26.578 | 0.000 | 89.443 | -80.000 | 13.333 | 13.523 |
| 15 | 23.865 | 19.286 | 145.712 | 254.558 | -332.139 | 19.284 | 9.642 | -57.857 |
| 16 | -92.406 | -11.856 | 63.598 | -257.988 | -41.507 | 300.585 | -0.000 | -160.793 |
| 17 | -68.589 | 61.922 | 33.530 | -64.706 | -28.424 | 28.236 | 12.021 | 92.883 |
| 18 | -63.286 | 15.777 | 66.295 | 33.705 | 8.903 | -40.000 | 5.275 | 54.757 |
| 19 | -34.783 | 25.231 | 24.339 | 19.246 | -7.076 | -15.000 | 23.515 | -50.462 |
| 20 | 53.640 | 25.825 | 75.135 | -28.962 | 19.206 | 75.135 | 6.667 | -10.000 |
| 21 | 9.894 | 130.177 | 18.322 | 152.589 | -174.772 | -6.011 | 40.445 | 60.000 |
| 22 | 43.950 | 125.050 | 129.540 | 37.425 | -30.699 | 44.687 | -0.000 | -125.050 |
| 23 | 36.796 | 20.919 | 31.941 | -42.296 | 15.441 | -5.418 | 0.000 | -26.941 |
| 24 | -54.426 | 5.547 | -7.189 | 15.000 | 30.988 | -40.784 | 25.785 | -1.095 |
| 25 | 23.275 | 153.211 | 25.285 | -3.211 | -49.095 | 37.927 | 0.000 | -153.211 |
| 26 | 17.929 | 79.566 | 120.351 | -278.783 | 212.462 | 113.918 | 19.917 | 79.566 |
| 27 | 34.067 | 42.195 | 68.176 | -45.451 | -53.989 | 83.627 | 40.060 | 30.000 |
| 28 | -106.060 | -6.304 | 209.240 | 18.912 | 215.342 | -105.459 | 9.456 | -119.240 |
| 29 | 31.131 | 44.046 | 74.319 | 0.000 | -62.290 | 12.915 | 44.046 | 28.012 |
| 30 | 32.290 | 66.590 | 187.482 | -39.756 | 219.369 | -180.000 | 28.112 | 90.000 |