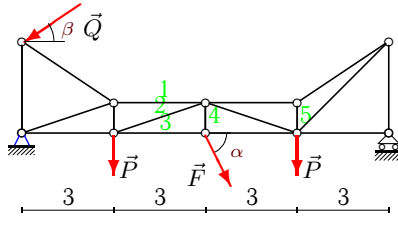
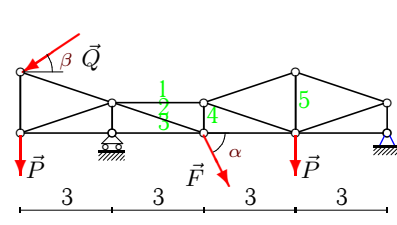
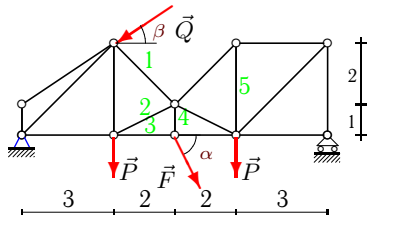
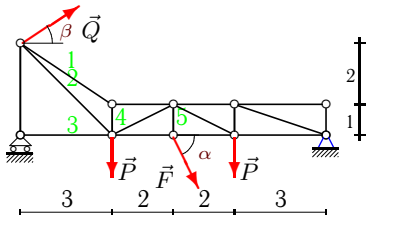
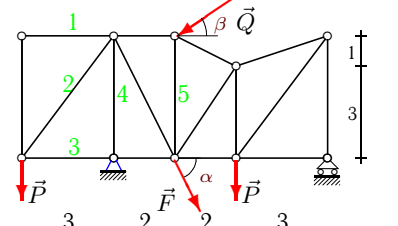
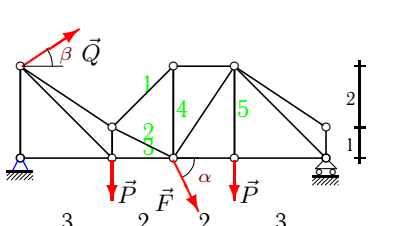
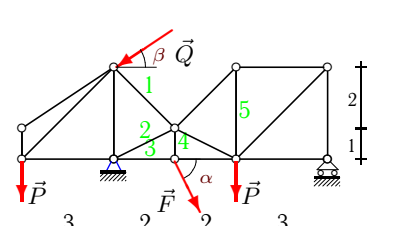
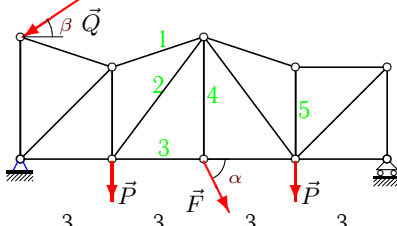
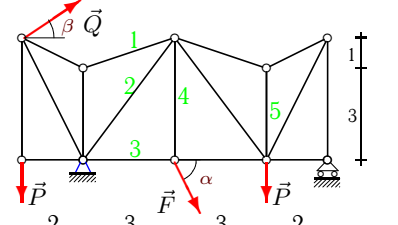
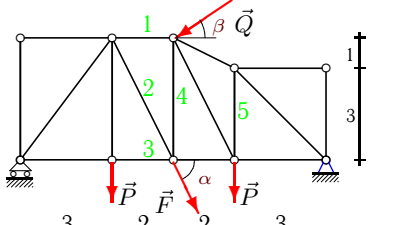
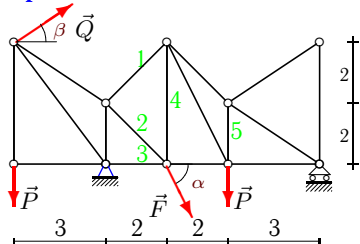


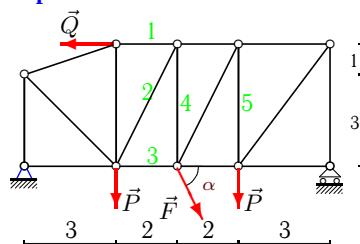
Расчет фермы

Кирсанов М.Н. Решебник. Теоретическая механика с. 37.

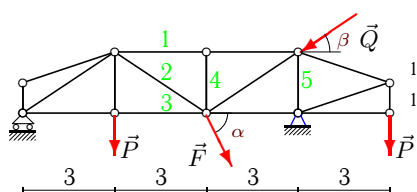
<p>Вариант 1</p>  <p>C5. $P = 10\text{кН}$, $Q = 40\text{кН}$, $F = 37\text{кН}$, $\alpha = 60^\circ$, $\beta = 15^\circ$.</p>	<p>Вариант 2</p>  <p>C5. $P = 70\text{кН}$, $Q = 40\text{кН}$, $F = 45\text{кН}$, $\alpha = 45^\circ$, $\beta = 45^\circ$.</p>
<p>Вариант 3</p>  <p>C5. $P = 10\text{кН}$, $Q = 40\text{кН}$, $F = 41\text{кН}$, $\alpha = 60^\circ$, $\beta = 15^\circ$.</p>	<p>Вариант 4</p>  <p>C5. $P = 50\text{кН}$, $Q = 40\text{кН}$, $F = 58\text{кН}$, $\alpha = 35^\circ$, $\beta = 30^\circ$.</p>
<p>Вариант 5</p>  <p>C5. $P = 40\text{кН}$, $Q = 90\text{кН}$, $F = 63\text{кН}$, $\alpha = 75^\circ$, $\beta = 30^\circ$.</p>	<p>Вариант 6</p>  <p>C5. $P = 80\text{кН}$, $Q = 60\text{кН}$, $F = 80\text{кН}$, $\alpha = 50^\circ$, $\beta = 15^\circ$.</p>
<p>Вариант 7</p>  <p>C5. $P = 80\text{кН}$, $Q = 80\text{кН}$, $F = 81\text{кН}$, $\alpha = 50^\circ$, $\beta = 30^\circ$.</p>	<p>Вариант 8</p>  <p>C5. $P = 80\text{кН}$, $Q = 30\text{кН}$, $F = 107\text{кН}$, $\alpha = 50^\circ$, $\beta = 15^\circ$.</p>
<p>Вариант 9</p>  <p>C5. $P = 90\text{кН}$, $Q = 60\text{кН}$, $F = 100\text{кН}$, $\alpha = 55^\circ$, $\beta = 30^\circ$.</p>	<p>Вариант 10</p>  <p>C5. $P = 60\text{кН}$, $Q = 90\text{кН}$, $F = 10\text{кН}$, $\alpha = 40^\circ$, $\beta = 30^\circ$.</p>

Вариант 11

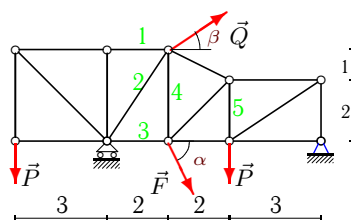
C5.
 $P = 20 \text{ кН}$,
 $Q = 30 \text{ кН}$,
 $F = 11 \text{ кН}$,
 $\alpha = 65^\circ$,
 $\beta = 30^\circ$.

Вариант 12

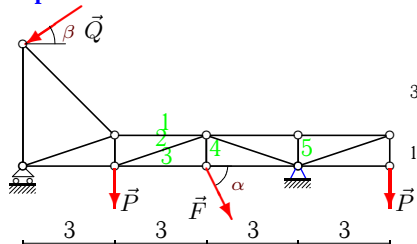
C5.
 $P = 20 \text{ кН}$,
 $Q = 90 \text{ кН}$,
 $F = 12 \text{ кН}$,
 $\alpha = 65^\circ$.

Вариант 13

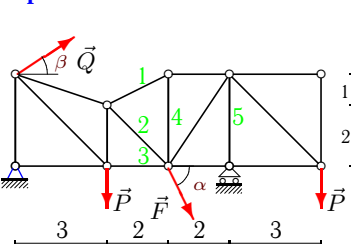
C5.
 $P = 70 \text{ кН}$,
 $Q = 30 \text{ кН}$,
 $F = 13 \text{ кН}$,
 $\alpha = 45^\circ$,
 $\beta = 45^\circ$.

Вариант 14

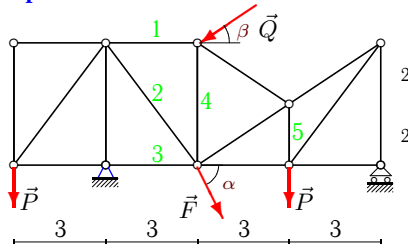
C5.
 $P = 20 \text{ кН}$,
 $Q = 70 \text{ кН}$,
 $F = 14 \text{ кН}$,
 $\alpha = 65^\circ$,
 $\beta = 45^\circ$.

Вариант 15

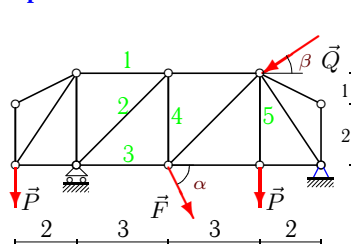
C5.
 $P = 60 \text{ кН}$,
 $Q = 30 \text{ кН}$,
 $F = 15 \text{ кН}$,
 $\alpha = 40^\circ$,
 $\beta = 45^\circ$.

Вариант 16

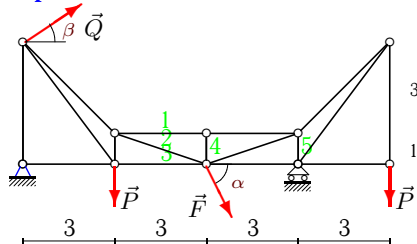
C5.
 $P = 90 \text{ кН}$,
 $Q = 50 \text{ кН}$,
 $F = 16 \text{ кН}$,
 $\alpha = 55^\circ$,
 $\beta = 15^\circ$.

Вариант 17

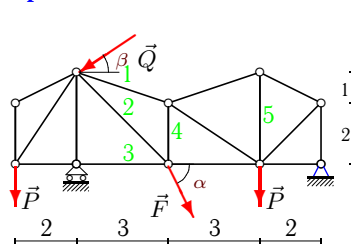
C5.
 $P = 90 \text{ кН}$,
 $Q = 50 \text{ кН}$,
 $F = 17 \text{ кН}$,
 $\alpha = 55^\circ$,
 $\beta = 30^\circ$.

Вариант 18

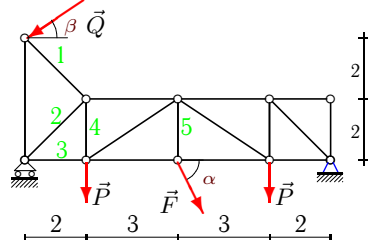
C5.
 $P = 90 \text{ кН}$,
 $Q = 40 \text{ кН}$,
 $F = 18 \text{ кН}$,
 $\alpha = 55^\circ$,
 $\beta = 45^\circ$.

Вариант 19

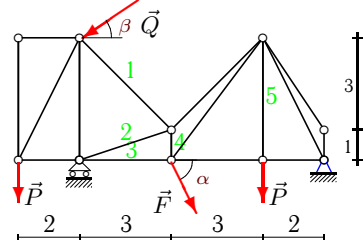
C5.
 $P = 90 \text{ кН}$,
 $Q = 60 \text{ кН}$,
 $F = 19 \text{ кН}$,
 $\alpha = 55^\circ$,
 $\beta = 15^\circ$.

Вариант 20

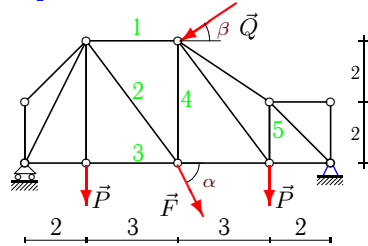
C5.
 $P = 30 \text{ кН}$,
 $Q = 60 \text{ кН}$,
 $F = 20 \text{ кН}$,
 $\alpha = 70^\circ$,
 $\beta = 45^\circ$.

Вариант 21

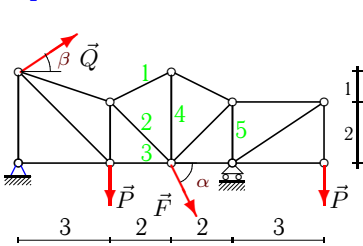
C5.
 $P = 40 \text{ кН}$,
 $Q = 50 \text{ кН}$,
 $F = 21 \text{ кН}$,
 $\alpha = 75^\circ$,
 $\beta = 30^\circ$.

Вариант 22

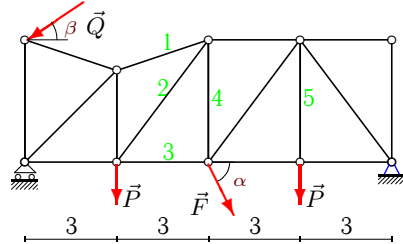
C5.
 $P = 60 \text{ кН}$,
 $Q = 80 \text{ кН}$,
 $F = 22 \text{ кН}$,
 $\alpha = 40^\circ$,
 $\beta = 45^\circ$.

Вариант 23

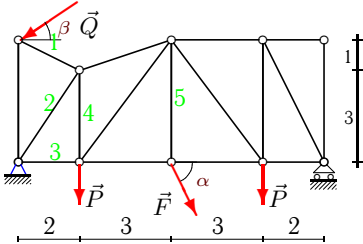
C5.
 $P = 80 \text{ кН}$,
 $Q = 50 \text{ кН}$,
 $F = 23 \text{ кН}$,
 $\alpha = 50^\circ$,
 $\beta = 30^\circ$.

Вариант 24

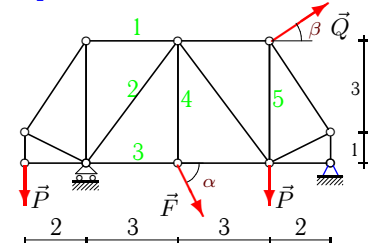
C5.
 $P = 30 \text{ кН}$,
 $Q = 90 \text{ кН}$,
 $F = 24 \text{ кН}$,
 $\alpha = 70^\circ$,
 $\beta = 15^\circ$.

Вариант 25

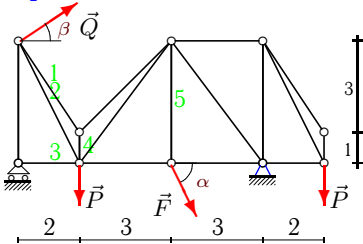
C5.
 $P = 90 \text{ кН}$,
 $Q = 60 \text{ кН}$,
 $F = 25 \text{ кН}$,
 $\alpha = 55^\circ$,
 $\beta = 30^\circ$.

Вариант 26

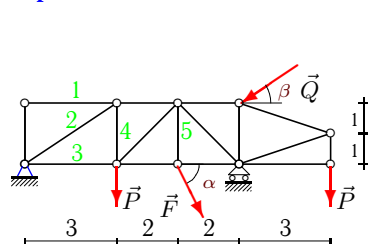
C5.
 $P = 40 \text{ кН}$,
 $Q = 90 \text{ кН}$,
 $F = 26 \text{ кН}$,
 $\alpha = 75^\circ$,
 $\beta = 15^\circ$.

Вариант 27

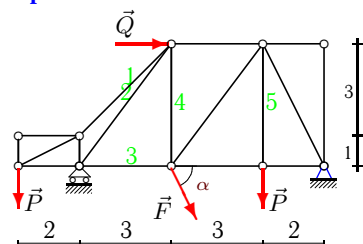
C5.
 $P = 90 \text{ кН}$,
 $Q = 50 \text{ кН}$,
 $F = 27 \text{ кН}$,
 $\alpha = 55^\circ$,
 $\beta = 45^\circ$.

Вариант 28

C5.
 $P = 40 \text{ кН}$,
 $Q = 70 \text{ кН}$,
 $F = 28 \text{ кН}$,
 $\alpha = 75^\circ$,
 $\beta = 45^\circ$.

Вариант 29

C5.
 $P = 40 \text{ кН}$,
 $Q = 30 \text{ кН}$,
 $F = 29 \text{ кН}$,
 $\alpha = 75^\circ$,
 $\beta = 15^\circ$.

Вариант 30

C5.
 $P = 90 \text{ кН}$,
 $Q = 40 \text{ кН}$,
 $F = 30 \text{ кН}$,
 $\alpha = 55^\circ$.

Отвѣты

	X_A	Y_A	R_B	S_1	S_2	S_3	S_4	S_5
1	20.137	46.033	16.362	8.869	-81.210	86.673	32.043	-32.724
2	-3.536	18.226	181.878	100.641	264.345	-323.137	-51.774	18.226
3	18.137	46.592	19.268	-11.249	-76.459	96.841	35.507	19.268
4	-82.152	77.026	36.241	-327.681	336.592	0.000	-181.765	33.267
5	61.637	194.434	-8.580	0.000	50.000	-30.000	-194.434	-60.363
6	-109.379	77.726	128.028	-226.341	-328.238	505.055	160.047	80.000
7	17.216	262.585	-0.535	211.117	14.975	-110.611	62.050	-0.535
8	-39.800	138.407	111.324	-96.982	-24.968	175.764	81.967	-37.108
9	-109.319	122.716	109.199	-30.866	-66.194	126.356	81.915	-60.666
10	70.282	54.537	116.891	-116.114	63.606	87.668	-50.463	27.269
11	-30.630	7.989	26.980	-33.553	-29.325	49.110	30.706	-13.490
12	84.929	61.438	-10.562	43.922	-46.329	-18.131	41.438	30.562
13	12.021	139.294	31.112	11.665	-70.107	46.667	-0.000	-104.294
14	-55.414	13.553	-10.363	20.000	36.491	-40.242	23.763	6.447
15	9.723	97.000	53.855	-13.073	86.514	-47.787	9.642	0.000
16	-57.474	-17.038	197.203	20.719	-119.969	75.477	-9.266	-197.203
17	33.550	195.195	23.730	-11.397	131.494	-101.050	-46.270	42.540
18	17.960	61.136	161.893	60.000	-101.672	11.893	71.893	90.000
19	-68.854	-6.099	186.134	-18.402	-254.785	271.010	-0.000	173.866
20	35.586	6.138	115.082	31.260	46.345	-20.000	-13.977	3.410
21	37.866	32.822	92.463	61.237	-34.169	24.161	67.463	20.284
22	39.716	7.019	183.691	122.426	61.493	-88.338	212.029	60.000
23	28.517	83.989	118.630	-88.288	48.288	59.315	-21.011	27.996
24	-95.142	-49.822	109.080	-25.402	-96.008	98.817	22.720	-79.080
25	37.622	82.919	147.560	-50.889	-14.334	108.840	27.560	90.000
26	80.204	110.624	17.784	97.194	-52.718	-50.962	106.561	25.114
27	-50.842	44.455	122.307	45.000	-40.383	-20.770	22.117	68.697
28	-56.744	101.652	-44.104	-376.378	356.160	0.000	-521.942	27.046
29	21.472	21.997	93.779	0.000	-39.656	11.524	21.997	28.012
30	-57.207	74.215	130.359	254.558	-275.449	-14.731	40.359	90.000